

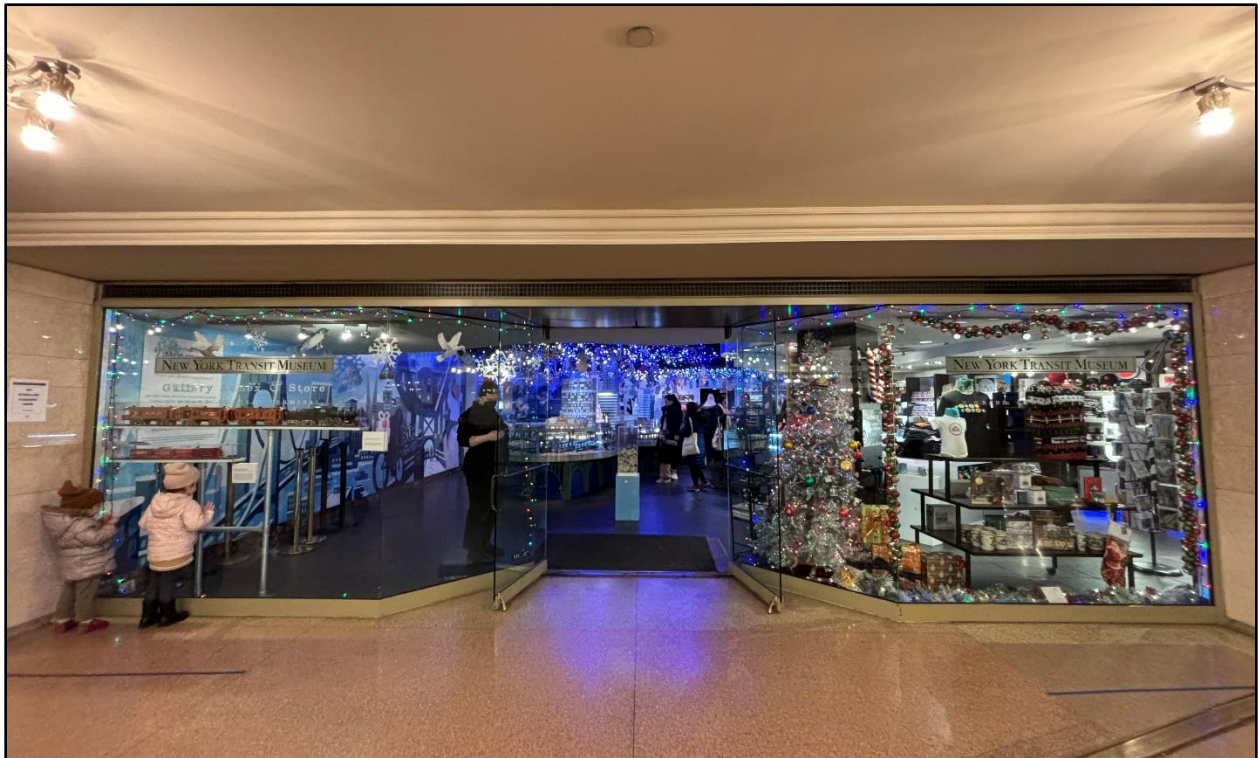
NEW YORK TRANSIT MUSEUM

Social Narrative

Holiday Train Show at the New York Transit Museum in Grand Central Terminal

We are going to see the Holiday Train Show at the New York Transit Museum's Gallery and Store in Grand Central Terminal.

We can find the entrance just off the Main Concourse in the Shuttle Passage. The train show is free so we do not need tickets.



When we walk inside, we'll see the Holiday Train Show is on the left and the store is on the right.



The Holiday Train Show has small model trains moving on tracks inside a large display case. There are lights and decorations hanging from the ceiling.



Photo by
Filip Wolak

We can watch all of the different trains go by. We cannot touch the trains or the display. Our hands must stay outside of the display case.



Photo by
Filip Wolak

It may be crowded with people. We will wait and take turns with other people to look at the trains. It may also sound loud.



Photo by
Filip Wolak

If we want, we can ask for a scavenger hunt paper to find different things hidden in the display.

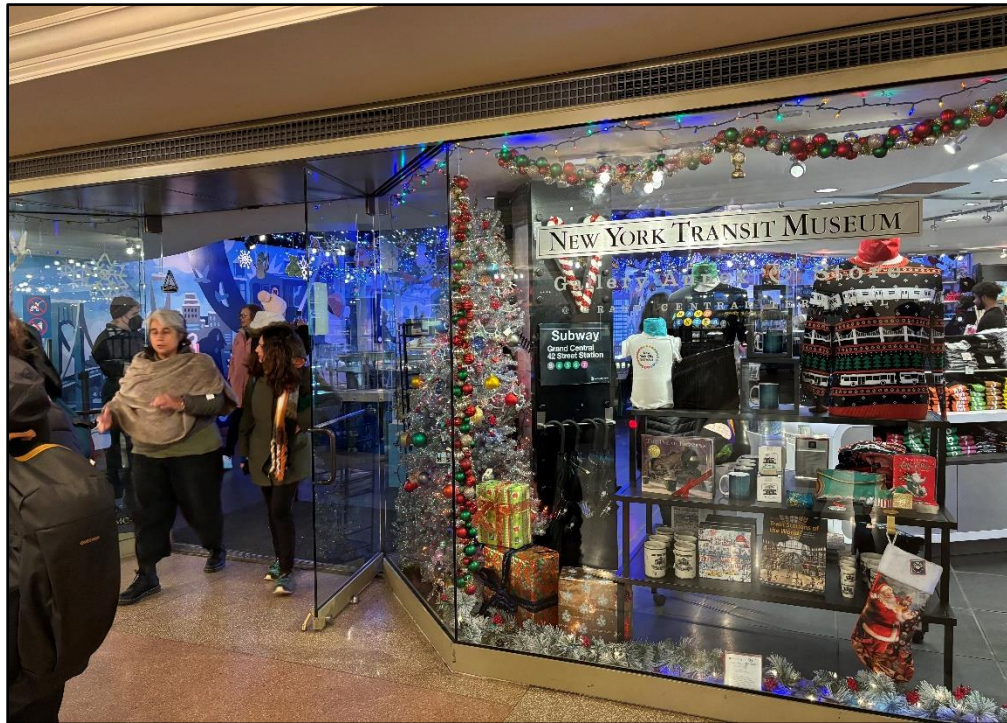


Photo by
Filip Wolak

If we have any questions or need help, we can ask the Transit Museum staff. We will also listen to any information they need to share with us.



We will leave when we are done looking at the Holiday Train Show, or we can buy souvenirs in the store if we would like.



We could also explore more of Grand Central Terminal before we finally leave the building.

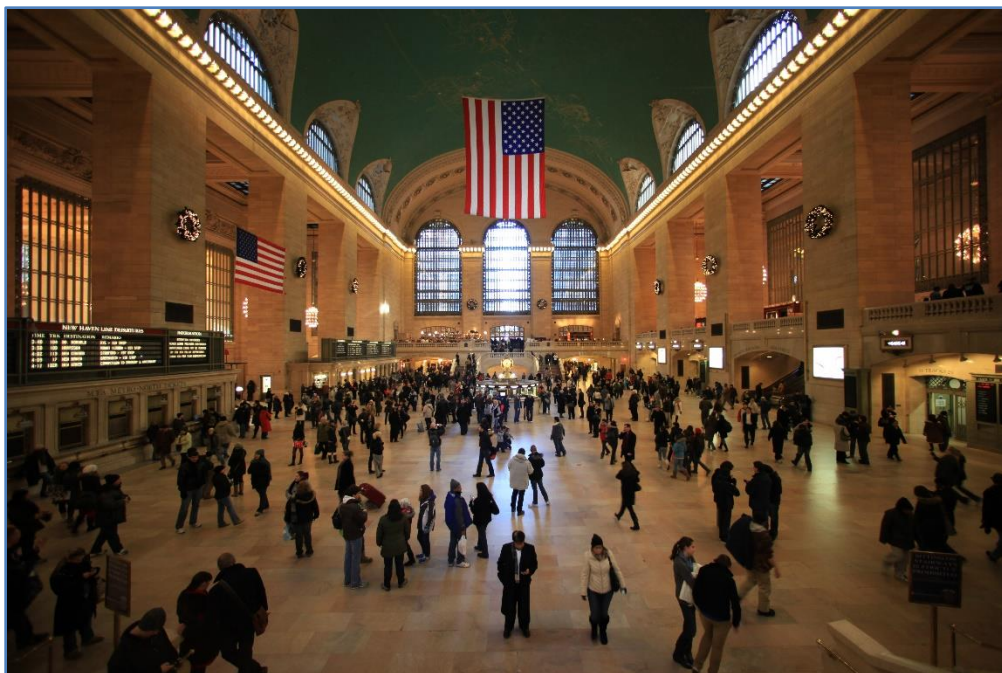


Photo by
Frank English